



Borough Bulletin

Vol. 18, Issue 3

The Bulletin's 18th Anniversary Year

Winter 2009

The New Maplewood Playground



The new playground at Maplewood Park. See story page 6

Doylestown

2009 Doylestown Borough Council

Ward #

- 1 Det Ansinn, President
- 1 Lou White, Vice President
- 1 Jennifer Corr
- 2 John Buckman
- 2 Mark Douple
- 2 Joan Doyle
- 3 Don Berk
- 3 Melissa Bond
- 3 David Bull

Libby White, Mayor

57 W. Court Street, Doylestown, PA 18901

(215) 345-4140

admin@doylestownborough.net

- John H. Davis Borough Manager
- Philip C. Ehlinger Asst. Borough Manager, Zoning Officer & Building Code Official
- James C. Donnelly Chief of Police
- Caroline Brinker Director of Finance
- Dan Lightcap Director of Public Works
- Craig Eaton Water Operations Dir. & Plumbing Inspector
- David Cell Building Inspector & Fire Marshal
- Kelli Scarlett Code Enforcement Officer & Fire Marshal



Council Corner

By Joan Doyle, Councilperson Ward 2

Now completing my second year of my four-year term, it has been a privilege to serve with the mayor and eight other members of council in a cohesive and teamwork approach to government. Each person is dedicated to the best interest of his or her constituents, and everyone has worked diligently to find consensus and reach the best solution.

I bring to council forty years in public service, in New York and Pennsylvania, both in elected and appointed positions. Thirty years ago, I became an elected official on the governing board of a community with 20,000 residents and served two terms. I was concurrently on the Board of Police Commissioners and before that served five years on the Zoning Board of Appeals, chairing it for three.

When I moved to Doylestown almost nine years ago, I wanted to become involved in serving the community that was now my home. I was appointed to the Revitalization Board and served on it for five years, before being elected to council.

For the past two years, I have contributed my knowledge and experience to serving as chair of the Zoning & Planning Committee and also as a member of three other council committees: Public Safety, Finance & Administration and Public Works. A licensed realtor in Doylestown, I am also an active volunteer visiting seniors with my pet rabbits.

Because I am writing Council Corner for the last issue of 2009, I would like to extend my thanks on behalf of my colleagues to the members of council that will be ending their dedicated service on council. Melissa Bond, David Bull, Jen Corr, and Mark Duple have given their time, knowledge, and energy to making our community a better place.

Thanks also goes to the Doylestown Business &

Community Alliance, known as the DBCA, for their dedicated work in beautifying the borough and bringing outstanding events to the community for all to participate in and enjoy. If you wonder who is responsible for paying for and putting up (and taking down) the hanging flower baskets and holiday decorations, it is the DBCA. They also provide the lighted holiday tree and Santa's House where children can visit throughout December. All DBCA fundraising events, such as the Arts Festival and Memorial Day weekend 5K Race, are held to raise funds for the beautification of Doylestown and to hold these events.

Borough Council has an important and strong partnership with DBCA, and I am proud to be the liaison between them. The borough provides some financial contribution to the beautification programs and also provides invaluable manpower from the Public Works employees. The Fire Department is also a partner, providing the installation of the holiday tree and lights and bringing Santa to Town. The borough's outstanding Police Department is also invaluable in ensuring that the events are safe for the public.

Doylestown is a place of many partnerships, of a community working together to ensure that it remains a wonderful place to live, work, and visit. It is a privilege for me to take part in strengthening the partnerships we have built and to be an advocate for residents. We have many challenges ahead for 2010, and we encourage resident participation at our meetings. You help set our agenda and guide our decisions.

Wishing all of you, on behalf of all Council Members, a wonderful holiday season and New Year.





Environmental Advisory Council Report

The Borough's Green Accomplishments: 2007-2009

Planning, Conservation, and Energy Efficiency

- ✦ **GREEN POINTS** green building incentive program — the first building permit fee abatement and incentive program in Pennsylvania, now being adopted by other communities across Pennsylvania.
- ✦ **Clean Energy Community** designation awarded for use of clean alternative energy sources.
- ✦ **Protection of Solar Access Ordinance** protecting resident's access to sunlight.
- ✦ **Traditional Neighborhood Developments** and the first TND zoning in Bucks County. Implementation of other land-use policies that reduce sprawl, preserve open space, and create compact walkable urban communities.
- ✦ **Tree Plantings and Protections**, and financing the ongoing renewal of the Borough's "urban forest" including annual tree planting program to increase shading and absorption of CO₂.

Transportation & Mobility

- ✦ **Participation in the national "Bicycle Friendly Community" program** and promotion of other traffic and pollution reducing transportation options such as the Bike Hike Trail System, SEPTA, and the Doylestown Dart/Rush bus line.
- ✦ **Bicycle-mounted building inspectors:** use bicycles instead of cars for their inspection rounds.
- ✦ **Computer controlled traffic signal management system** networking signals to reduce traffic congestion and improve air quality.
- ✦ **Safe Walking Initiative** to encourage walking instead of driving.

Greener Government

- ✦ **Purchasing alternative fuel and hybrid vehicles** for Borough departments and pursuing the conversion of Borough vehicles to clean natural gas.
- ✦ **LED traffic signal conversion** and ongoing conversion of streetlight bulbs to efficient LEDs.
- ✦ **Purchase Wind Power** for 20% of the Borough government's usage.





Kill-A-Watt™ Meter Loan Program

Borrow a Kill-A-Watt™ meter for free and do your own home electrical audit

The Borough has several Kill-A-Watt electrical usage meters to loan for free to any interested Borough resident. Connect your appliances into the Kill-A-Watt and assess how efficient they are. The Kill-A-Watt Kilowatt Hour Meter has a large LCD display and counts consumption by the Kilowatt-hour just like utility companies. You can figure out your electrical expenses by the hour, day, week, month, even an entire year using the Kill-A-Watt kilowatt hour meter. Monitor the quality of your power by displaying Voltage, Line Frequency, and Power Factor.

The Borough will be lending the meters to Borough Residents for one week at a time. Come to the front desk at Borough Hall, 57 W. Court Street, fill out a simple form and provide proof of residency (driver's license, etc.) and the meter is yours to use for seven days! Meters are available on a first come first serve basis.



The Village Basket Food Drive

The Village Basket is a new community charitable network dedicated to helping Bucks County's hidden hungry. Founded by local Central Bucks High school students, it deploys a network of food collection barrels, or "Village Baskets," at an ever increasing number of Bucks County locations. All food and items donated are given directly to existing Food Banks in the Central Bucks County area.

This year's campaign encourages you to donate packaged non-perishable food items at one of their downtown Doylestown basket locations. These include **Puck** on Printers Alley and the **County Theater** on East State Street. Donations of unopened packages of baby diapers are also always needed. You can find out more about the Village Basket by going to:

www.thevillagebasket.com



DO YOU KNOW?

When parents establish clear "no-use" rules and expectations, their children are more likely to lead alcohol and drug-free lives.

Tell your kids what you expect and why. Setting a firm rule of no alcohol or drug use will help them resist the pressure to use. Make it clear that there will be immediate consequences if the rules are broken and be prepared to enforce them consistently and fairly.

As parents, you have tremendous influence on the decisions your child makes. Alcohol and drug abuse can be prevented, and prevention starts with you.

Let them know you are serious!



Central Bucks Drug Free Project

www.BCCADD.org • www.CB-CARES.org



Building Green in the Borough

When Phil and Linda Cacossa decided to expand their 1930's arts and crafts cottage on Oakland Ave they knew it was going to be much more than a traditional building project. "I've spent a good portion of my career promoting green design, so we knew that our addition was an opportunity to put that experience to practical use," said Phil Cacossa, Principal and Director of Sustainable Design at Design Resources Group Architects in New Jersey. Phil is also a member of the Borough's Environmental Advisory Council. The two-story addition plans were submitted under the Borough's Green Points program and received the highest grade since the program's inception. "The 46 points not only made us feel pretty good about the direction of the project it also saved us a considerable amount of money on our building permits."

The design of the addition focused on maintaining the original style and objectives of the arts and crafts tradition while incorporating the latest green design techniques. "One of the nice surprises when we began our research was the amount aesthetically pleasing options that are available in green design products," said Linda Cacossa. The bamboo floors look like traditional hardwood, but are harvested and reforested in less than one-tenth the time. All the beautiful paint colors were available in low or no VOC products and all of the various light fixtures throughout the addition utilize low wattage compact fluorescent bulbs. The cementitious exterior plank looks just like clapboard, but is made from recycled fibrous cement product. The prefinished plank not only looks great, but the finished is applied in an environmentally controlled facility which minimizes the release of harmful VOCs and comes with a 15 year warranty. "I love the idea that we can be green and I don't have to paint for another 15 years," said Linda.

The General Contractor, Matthew Jermyn, embraced the idea of building green and brought ideas of his own to the project. "When we removed the kitchen and dining room walls as saw that not only was there no insulation, but not even a cavity to put insulation in, we recommended adding wood studs and spray insulation. It really helps reduce the heating and cooling load on the house."

The Cacossas didn't have to sacrifice comfort for their dedication to green design either. The addition is heated and cooled with a state-of-the-art unit that has an SEER (Standard Energy Efficiency Rating) of 19. The industry standard for this type of equipment is 13-15. You can find evidence of the green design influence in the kitchen as well. The induction cook top boils a pot of water in under a minute and shuts off the instant the pot is removed from the surface. The cook top uses one-third the energy of a traditional stove.

Even the new driveway has gone green. "We knew from the beginning of the project that we wanted to do something to reduce the runoff from our property every time it rains." A 1500 gallon rainwater harvesting system was installed under the driveway which collects the water from the roof drains and stores it for future use. "We love our gardens and removed most of the manicured lawn to bring back the cottage feel to the property. Now we can water our gardens or wash our cars and not worry about wasting precious resources."

If you would like to learn more about the green design techniques used on the Cacossa's addition or to tour the project, email Phil at philc@drgaia.com.



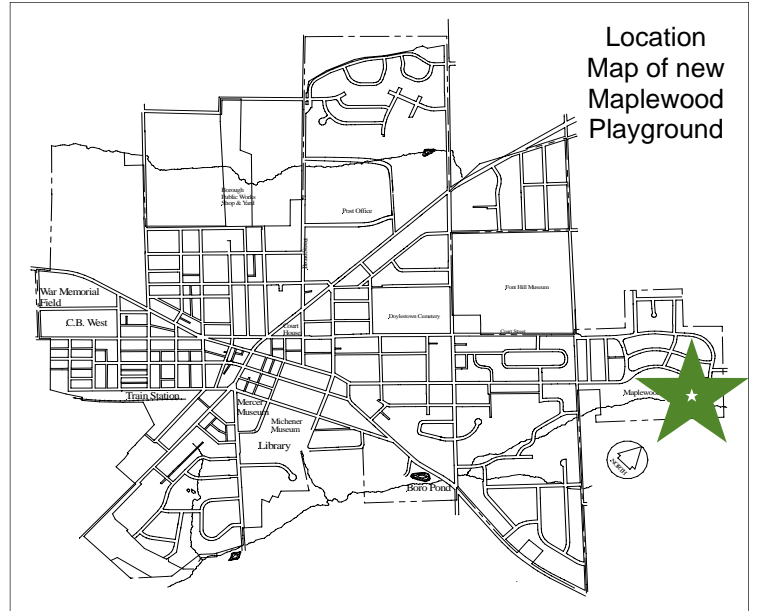
The Cacossa residence is typical of many older Borough homes that can benefit from energy improvements, and also save on fees using the Green Points program.



The New Maplewood Playground

Miracle Recreation Equipment Company, the manufacturer of Doylestown's playground equipment, sells over 4,000 play structures annually. Every year, requests are sent out to Miracle Representatives nationwide to submit play structures sold that year as candidates for the upcoming catalog. Only 50 structures are selected nationwide to be featured each year. Doylestown Borough's Maplewood Playground has been honored as one of those 50 selected structures for 2010. The Maplewood Playground will be seen nationwide and used as a model for other municipalities and institutions to follow as they design play structures to fit their needs.

The honor would not have been possible without the Have A Heart Foundation, which funded most of the project, and the Borough Engineer, Gilmore and Associates, who provided their services at no cost. Dave Burger, Borough Parks Foreman since 2002, also deserves special recognition. Dave grew up in the Borough and as the father of two young children, brought his experience in watching children play to create a design that encourages children to use their imaginations and develop new skills and confidence as they grow. Dave will also be the first to admit that the project would not have been possible without the skill and dedication of the Doylestown Borough Department of Public Works. Dave and the Public Works Department are justifiably proud of their work in creating what will be a nationally recognized playground for the children of Doylestown.



The Borough's Excellent Public Works Crew



Doylestown Borough: A Clean Energy Community

The Borough of Doylestown recently achieved the designation of **“Pennsylvania Clean Energy Community.”** The Borough was also awarded a free 1 Kilowatt Photovoltaic Solar Collection System for achieving our clean energy goals. The 1 Kilowatt system is valued at \$10,000 and was recently installed on the Fanny Chapman Pool building.

The Fanny Chapman location was chosen because of its clear southern exposure and ideal roof slope. The pool also offers good visibility as an educational demonstration system for area families and children. The controller box is mounted in a custom display case for good visibility and has a digital display that shows how much electricity is being produced, and how many pounds of CO2 the system has saved. The electrical energy produced from the new solar system will off-set the usage at the pool house and attached apartment. It can also sell electricity back into the PECO grid when solar electric production exceeds building demand.

To win the award, the Borough launched a successful campaign drive to get more than 7% of Borough residents to buy clean wind-generated power. Buying 300 kWh of wind energy only adds \$7.62 per month. The Borough government also began purchasing 20% of its energy from these same clean sources.

The Clean Energy Community award is another step the Borough of Doylestown and its residents have taken towards creating a sustainable community.



More Tips for Weathering the Winter

- Consider using **non-toxic de-icing substances** such as clean clay cat litter, sand, or fireplace/stove ash to prevent hazardous waste from chemicals. Chemical de-icers can be hazardous to your pets, your trees and shrubs, and the environment. Antifreeze that leak from car engines and chemical snow melters on driveways, roads, and runways can pollute surface waters and groundwater through the soil.
- **Winterize your vehicle** by checking your air filter and fluid levels, checking tires for tread wear and proper inflation, and checking the condition of your windshield wipers. Ensuring your vehicle is ready for weather changes will reduce damage, which prevents waste from broken parts, and will keep you safe on the road.
- If you have a wood-burning fireplace, **save your ashes** in a tin instead of throwing them away. Cold wood ashes can be mixed in your compost heap to create a valuable soil amendment that provides nutrients to your garden.
- **Use electric snow removal products** rather than gasoline-powered ones. While electric products consume energy, they do not emit greenhouse gases. As alternatives, use snow shovels, ice crackers, and brooms to clear snow from your sidewalk, porch, or driveway.
- If you have a manual thermostat or no thermostat at all, one way to save energy and money this winter is to **install an ENERGY STAR qualified programmable thermostat**. When installed and used with the four pre-programmed temperature settings for weekend and weekdays, you can save about \$100 each year while staying comfortable. Before leaving for vacation, **turn down your thermostat** (or use a programmable one) so that you don't waste natural resources by generating unneeded heat. You can also buy outdoor and indoor lights with timers so that lights don't stay on all night.
- **Close the recycling loop**. Many articles of clothing, such as jackets, scarves, gloves, and boots, are now made from recycled materials. Most fleece products are made from recycled plastic soda bottles, and certain clothing and shoe manufacturers use recycled cotton scraps and rubber tires to make their products.
- Winter storms often cause power outages. Prevent waste by keeping **rechargeable batteries** rather than disposable ones stored throughout your house with your flashlights. If you do use disposable batteries, prevent hazardous waste by buying batteries with low mercury content.
- To make sure your heating system (boiler, furnace or heat pump) is operating at its most efficient, it is a good idea to have a contractor perform a **routine check-up and any necessary maintenance** on the equipment before freezing weather drives up your energy bill.



winter Borough Bulletin



Central Bucks School District Report

Concert Calendar 2009-10

Version 11a- August 29, 2009

CB East

Thursday, November 12- East String Festival
 Wednesday, December 9- Band
 Wednesday, December 16- Choral
 Tuesday, December 22- East/Holicong Orchestra
 Wednesday, March 3- Band
 Wednesday, May 5- Band
 Wednesday, May 12- Choral
 Wednesday, June 2- Orchestra

CB West

Tuesday, November 17- West String Festival
 Thursday, December 3- Band
 Thursday, December 17- Chorus
 Monday, January 11- Choir-Band Curricular concert
 Thursday, January 21- Orchestra Winter
 Friday, February 5- West Jazz Concert
 Monday, May 10- Choir-Band Curricular concert
 Friday, May 21- Band
 Tuesday, May 25- Orchestra
 Thursday, May 27- Choral

CB South

Thursday, November 19- South String Festival
 Thursday, December 3- Band
 Wednesday, December 16- Choral
 Wednesday, January 27- Orchestra
 Thursday, March 4- Small Ensembles
 Tuesday, April 27- Band
 Thursday, May 20- Choral
 Wednesday, May 26- Orchestra Spring

Elementary

Wednesday, December 2- New Britain Tree Lighting, including Kutz, Butler & Pine Run 6th grade bands

PMEA Festivals

Saturday, November 21- Dist Choral Auditions
 Saturday, December 12- Dist Instrumental Auditions
 Thurs/Sat., January 14-16- Dist Orch- Council Rock South
 Thurs/Sat., January 28-30- Dist Chorus- Souderton/Chris. Dock
 Saturday, February 6- BCMEA County Music Festival Auditions- Pennsbury
 Thurs/Sat., February 11-13- Dist Band- Lew. Merion/Harrilton
 Thurs/Sat., February 25-27- Region Orch- Wissahickon/Gwn. Mercy
 Thurs/Sat., March 11-13- Region Chorus- Bensalem/Truman
 Thurs/Sat., March 18-20- BCMEA County Music Festival- Council Rock
 Thurs/Sat., March 25-27- Region Band
 Thurs/Sat., April 22-24- PMEA Conference- Pittsburgh, PA
 Saturday, May 8- PMEA Large Ensemble Inst Fest at CB East

Lenape MS

Wednesday, December 9- Choral
 Thursday, December 10- Instrumental
 Wednesday, January 20- 7th Grade
 Thursday, May 13- Choral
 Tuesday, May 18- Instrumental
 Wednesday, May 19- Instrumental

Holicong MS

Thursday, December 10- Choral
 Thursday, December 17- Band
 Tuesday, December 22- East/Holicong Orchestra
 Friday, January 22, VH1 Save the Music, 7:30 PM
 Thursday, May 6- Choral
 Thursday, May 13- Instrumental
 Wednesday, May 26- Orchestra/H-Factor

Tamanend MS

Tuesday, December 8
 Wednesday, December 9
 Friday, March 26- Tamanend Jazz Festival
 Monday, May 3
 Tuesday, May 4

Tohickon MS

Monday, December 7
 Monday, December 14
 Tuesday, January 12- 7th Grade Perf. Arts Chorus
 Monday, May 10
 Tuesday, May 11 Instrumental

Unami MS

Tuesday, December 8
 Wednesday, December 9
 Thursday, December 10
 Tuesday, May 4
 Wednesday, May 5- Choral
 Thursday, May 6- Choral
 Tuesday, June 1- Concert Under the Stars

Bucks County Parks & Recreation

Tinicum Park Old Fashioned Christmas December 5th

11 a.m. to 4 p.m.

Tinicum Park Barn, River Road (Rt. 32), Erwinna, PA

Step back in time to a slower paced age of carriage rides and holiday festivities. This very successful program is in its sixth year. Join the fun at this holiday program for all ages. This program will feature horse drawn antique carriage rides all decorated for the holiday season. Additional activities will include family photos with Father Christmas, entertainment, crafters, and a craft area for kids and adults, plus refreshments will be offered to cap off the festivities. Carriage Rides are by reservation only and seating is limited. The cost is \$12 for adults /\$8 for children. Children 14 years and under must be accompanied by a parent or guardian. The registration deadline for the rides is 4 p.m., November 30. Rides will be offered every half hour beginning at 11:00 a.m. and ending at 3:30 p.m. The ride will be 1 mile in length around the park. For information and reservations, please call Jill Unger (215) 489-5132. This program is sponsored by the Bucks County Department of Parks and Recreation.





Mercer & Fonthill Museums

Ring in the Holidays at the Castles

The Mercer Mile will be bustling with activity in December as the Mercer and Fonthill Museums celebrate the holiday season with an entertaining slate of programs that the whole family can enjoy. The festivities kick off on Wednesday, December 2, with Fonthill's Winter Wonderland Holiday Tours. Guests receive a guided tour of Henry Mercer's castle home which features themed trees and dazzling decorations in every room. Tours run until Sunday, January 2 and reservations are suggested. Regular admission fees apply.

Fonthill presents its popular Graham Cracker Castles Workshop, on Saturday, December 12. Families will use the castle as a guide to create their very own architectural masterpieces made out of graham crackers, icing, and gumdrops. Two sessions of the workshop will be offered at 10:30 a.m. and 1:30 p.m. Registration is required and the cost of each session is \$12 per person.

Delight in the sounds, scents, and scenes of the holidays at the Mercer Museum's annual free Holiday Open House on Tuesday, December 12 beginning at 7 p.m. The popular community gathering includes music, cider, the "burning of the greens" bonfire, and Santa in the museum's Log House. Go across the street to the James A. Michener Art Museum for more free holiday activities.

Children will build with Legos™ and power their creations with computer technology, as the Mercer Museum offers a three-day session of its popular Lego Robotics Workshop, on December 28, 29, and 30. To register for the workshop, students must have completed Lego Robotics Basics Camp or currently be in grades 4-6. The workshop is \$85 per student. Space is limited.

Visit www.mercermuseum.org for a complete list of holiday programs.

For information or to register for holiday programs at Fonthill, call 215-348-9461, ext 10.

For information or to register for holiday programs at the Mercer Museum, call 215-345-0210, ext. 123.

CB Ambulance Report Star of Life Meets Red Cross

Central Bucks Ambulance and Rescue Unit (CBA) is a non-profit combination volunteer/career Emergency Medical Services Company with 59 volunteers and 25 full-time and 25 part-time career staff members. It provides Advanced Life Support to a 130 square mile area in beautiful Bucks County, Pennsylvania from two locations and is the primary Emergency Medical Services provider for Doylestown Borough.

This past year CBA formed a partnership with our local chapter of the American Red Cross. The Red Cross lost their building in the Borough and was looking for training, meeting, and parking space. The two organizations worked together, and it seemed like a perfect fit. In addition to allowing the ARC to park its response vehicles at our station, we have provided them with access to our training room for meetings and community CPR and first aid training. Not only that, we can be used as a refuge during any type of emergency.

When the situation presented itself with the American Red Cross, we found this to be the perfect opportunity to build a relationship that would, between the two of us, provide outstanding services to communities in a way that has never been done before. As part of this relationship, we became a member of Southeastern PA Volunteer Organization Active in Disaster which is a part of a national collaboration of diverse organizations and citizens trained to meet community needs in the wake of a large-scale disaster. The partnership has opened CBA to take our community service to a higher level. This allows us to make use of resources that had not been used in prior years. This opportunity also offers our staff and volunteers training that we are not typically exposed to. The SEPA VOAD relationship also allows us to offer our assistance in our region as we have never done before. The staff of CBA is excited to get involved and to answer the call of help in a way that we never have. This is uncharted waters for CBA, and I expect that we will have many new experiences and build relationships in many other venues that have never been typical.

CB Ambulance Annual Subscription Plan

The Subscription Plan is mailed out each fall and allows residents to contribute a small fee in lieu of any out-of-pocket expenses not covered by their insurance plan. Why pay for a subscription plan if we are paying taxes? The subscription plan has always been part of our operating budget. Along with our insurance billing, this has been the source of our funding. Unfortunately, these two sources have not generated the needed funds to create a Capital purchase plan. The tax revenue ensures a dedicated source of Capital Funding for equipment and ambulances.





Thanks to the art students from the Amanda Layre Fine Art Studio, the Drug Free Community Project Art Mural message program is coming to life. Their message is "Don't Pollute Yourself". They have chosen to use the environment and toxins to communicate their message to other teens. Research shows teen to teen messaging is the most effective way to convey ATOD messages, aside from parents who are still a child's #1 resource for accurate ATOD information.



Central Bucks Drug Free Project



For the past several years CB Cares has partnered with Bucks County Council on Alcoholism and Drug Dependence, Inc sponsoring the anti-drug coalition, The Central Bucks Drug Free Project. Together they have engaged 12 different sectors of the community to work together in their efforts, including the Borough of Doylestown. They are launching a new campaign with the goal of empowering parents to teach their children to say no with confidence to alcohol and drugs. The campaign is called:

DO YOU **KNOW?**

And it places equal emphasis on the words "know" and "NO", because both knowledge of the dangers of alcohol and drug use and the skill to know how to help them say "no" are both key for parent and their youth. The coalition also works on promoting "pro-social activities" like the CB Cares Youth to Community Arts Series for aspiring musicians and the underage drinking art mural shown above, which involve youth in a healthy way in our community life. The mural was begun during the Doylestown Arts Festival and was unveiled during PumpkinFest last month to kick off Red Ribbon week in the community. For more information visit: cb-cares.org.



Habitat for Humanity of Bucks County ReStore

The Habitat for Humanity of Bucks County ReStore recently commemorated its first anniversary, and there was much to celebrate! Since opening the doors last Fall, the ReStore has become the go-to place for Bucks County citizens looking to save money on homebuilding supplies and home furnishings, to donate quality new and gently-used items, and to recycle materials. The community support has allowed the ReStore to raise over \$325,000 to support the important work of Habitat for Humanity right here in Bucks County.

ReStores operate throughout the country, offering consumers retail outlets where new and used building materials and home items are sold at a fraction of normal prices, and proceeds help fund the construction of Habitat houses within their community. ReStores offer many benefits and opportunities for families and individuals looking to support the efforts of Habitat Bucks.

Donating to the ReStore

Materials sold by Habitat ReStores are donated by building supply stores, contractors, demolition crews and individuals. In addition to raising funds, ReStores help the environment by rechanneling good, usable materials into use. Acceptable donated items include: Building, plumbing, electrical, roofing, landscaping and mason materials, appliances, furniture, tools, vehicles, and home décor items.

Volunteering at the ReStore

Both groups and individuals have lots of opportunities to volunteer at the ReStore. Tasks include unloading deliveries, cleaning and testing donations, stocking merchandise, assisting customers, and answering phones. Volunteers must be at least 16 years old. Contact Laura at l.mcclellan@habitatbucks.org or 215.822.2812 x302 for more info!

Recycling with the ReStore

The ReStore takes many of your trash items for recycling: All metals, including broken appliances; car and truck batteries; eyeglasses (for the Chalfont Lions Club); cars (as part of the Cars for Homes program); paper including catalogs, magazines, newspapers, junk mail, office paper, including shredded and fax pa-

per, notebooks, folders. Please note that we will not be able to accept phone books or cardboard.

Shopping at the ReStore

The ReStore has the best deals in town — come see for yourself! Prices are generally 25%-75% below retail, new inventory arrives daily, and there are special monthly sales on home improvement materials, antiques, architectural items and other cool home décor treasures. Of course, the best part of shopping at the ReStore is knowing that proceeds stay local to build much needed affordable homes in our neighborhoods, and that your purchases are helping to save the environment by making our landfills a little less full. Bring in this article to save 10% on your next shopping trip!

Thanks to all who have made the ReStore's first year in business a success. If you haven't shopped, donated, recycled or volunteered yet, we hope to hear from you soon!





From the Desk of
**State Representative
Marguerite Quinn**
143rd Legislative District



If you are a retired person who depends on income from investments and you suffered significant losses last year, you may now be eligible for some of Pennsylvania's programs for senior citizens that have income requirements.

The **Property Tax/Rent Rebate Program** benefits Pennsylvanians who are 65 years or older, widows and widowers 50 years or older, and those 18 years or older with permanent disabilities.

Income eligibility limits for homeowners, excluding 50 percent of Social Security, Supplemental Security Income, and Railroad Retirement Tier 1 benefits, are as follows:

- \$0 and \$8,000, up to \$650 rebate
(Homeowners and renters)
- \$8,001 to \$15,000, up to \$500 rebate
(Homeowners and renters)
- \$15,001 to \$18,000, up to \$300 rebate
(Homeowners only)
- \$18,001 to \$35,000, up to \$250 rebate
(Homeowners only)

If you have not signed up for the 2008 Property Tax/Rent Rebate Program, applications will be accepted through Dec. 31, 2009.

PACE and PACENET are open to individuals who are older than 65 years of age and have resided in Pennsylvania for at least 90 days. These programs offer comprehensive prescription coverage to those who meet the income requirements.

PACE requires a total income for the preceding calendar year of less than \$14,500 for a single person or less than \$17,700 combined for a married couple. Enrollees are responsible for a \$6 co-payment for each generic medication and a \$9 co-payment for brand names. These co-payments are made to the pharmacy at the time of purchase.

PACENET requires a total income for the preceding calendar year of between \$14,500 and \$23,500 for a single person or between \$17,700 and \$31,500 combined for a married couple.

PACENET members who enroll in a Medicare Part D plan will pay the Part D premium directly to the plan. Depending on the Part D plan in which an individual is enrolled, monthly premiums will range between \$14.80 and \$28.45. PACENET members who do not enroll in a Part D plan will pay \$28.45 each month at the pharmacy toward the cost of their medications. If this is not paid on a monthly basis, it will accumulate. Additionally, all PACENET enrollees will pay co-payments of \$8 for each generic prescription medication and \$15 for each brand name to the pharmacy at the time of purchase.

In addition to the Property Tax/Rent Rebate Program and PACE and PACENET, Pennsylvania has many other programs available to senior citizens. To find out more about programs for seniors or to receive assistance in applying for any state program, contact my office at (215) 489-2126.

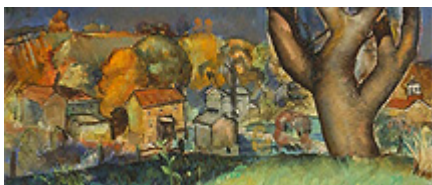
Finally, area veterans may be eligible for programs through the Pennsylvania Department of Military and Veterans Affairs. Visit my Web site at RepQuinn.net and access "Information for Veterans."





James A. Michener Art Museum

EXHIBITS



Charles W. Ward:
Paintings for People
Through February 14, 2010



An Independent Spirit: The Art and Life of R.A.D.
Miller
Through January 3, 2010



Outdoor Sculpture Program: Virginia Maksymowicz
Through February 28, 2010



An Evolving Legacy: Twenty Years of Collecting at
the Michener Art Museum
Now On View

Fire Company Report

Your fire company is proud to announce that we placed our new aerial truck in service on August 15th. The 2009 Pierce is equipped with a 100-foot ladder and a fire pump capable of supplying 1500 gallons of water per minute. The new Ladder 79 is housed at our Warden Road Station and replaced a 1990 model. As in the past, we do our best to keep major equipment in service for two decades and expect to do the same for this piece of apparatus.

We were pleased to support First Friday in August and thank you for stopping at our displays on the Hamilton Street Parking Lot. Our Fire Prevention Open House was once again held in conjunction with October's First Friday and in support of National Fire Prevention Week. Our Fire Prevention Poster Contest for Elementary grade and younger students was quite successful again this year and we thank the schools for the continued support of this program.

During 2008, we responded to 700 emergency calls and at this writing, are well on our way to having another record year. A great new year's present to us would be a reduction in the number of times our volunteers have to respond. Speaking of volunteers and as most of you are aware, we are an all volunteer organization; we are always seeking additional members that are interested in community service. Check out our web site at: www.doylestownfireco.org for our latest news and information about joining your fire company. As we approach winter and revert to Eastern Standard Time, please check your smoke detectors and change the batteries.

Our Annual Fund Drive was mailed to you in early October. Thank you for your generous support helping us keep you and our firefighters safe. If for some reason you did not receive our donation request, please call us at 215-348-2656 and leave a message on the Financial Secretary's voice mail.

Looking ahead to 2010, mark your calendar and plan to have breakfast with us at our Annual Pancake Breakfast on March 20, 2010 at the main Fire House on Shewell Avenue. Have a safe holiday season and a happy and prosperous new year.





The Women in Business Committee of the Central Bucks Chamber of Commerce would like to invite you to attend the Gourmet Getaway, Cuisine for a Cause. The Gourmet Getaway is an evening of food and wine tasting from a variety of the area's finest restaurants and caterers. The event will include entertainment, silent auction and raffle prizes. All proceeds benefit the Women in Business Scholarship Program which provides educational funds to a deserving Bucks County woman to use to gain skills, enhance her knowledge, improve job opportunities and give back to the community. Since 1983, the Chamber has awarded over \$221,564 in scholarships through this program.

Please check your calendar and reserve this date:

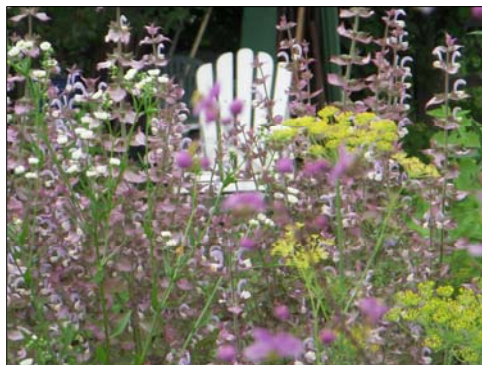
Gourmet Getaway
Thursday, March 25, 2010
5:30 PM - 8:00 PM
Keenan Motors
2nd Floor Showroom

COMING TO A BACKYARD NEAR YOU ...GOT URBAN FARMING?

What do chicken coops, rain barrels, fruit trees, and organic veggies in your backyard have to do with the average urbanite? Today they're all part of the fastest growing trend for those who want the best that nature has to offer... homegrown, handpicked food from the city! Americans in cities all over the country are going green by becoming more self-reliant, creating backyard homesteads and turning lawns into food.

"Agriculture is the new black," says Homegrown.org, a gardening blog which celebrates local food, gardening, and cooking. Mmmmm...and it's all growing leaps and bounds according to statistics. Amazingly, keeping chickens in urban lots and suburban yards has reached all time highs, with commercial hatcheries unable to meet residential demand. Who knew? Enter the GOOD FOOD REVOLUTION!

Will Allen, founder and CEO of GROWING POWER and recent MacArthur Genius award recipient, was a professional basketball player turned organic farmer, who is now the unofficial leader of this grass-roots revolution. Allen runs a fantastically successful urban farm and green-collar training center in Milwaukee. His passion? Training urban kids to think green -- "micro" greens, worm composting and greenhouse grown fish -- all of which translates into local food and jobs. "We need 50 million more people growing food," Allen told the New York Times recently, "on porches, in pots, in side yards." His goal? Everyone gets to eat healthy food, period, and why? Because he says, "everyone can grow food."



How can you get involved and start your own homestead? We're looking for a Doylestown Borough resident who has a sunny backyard and wants to make it happen and help build community food security! You have the resources, but maybe not the time or expertise. We help you build it with others who want to learn to grow food via classes in the Spring, just in time for the next growing season. Sounds like a great way to start 2010. If you are interested in participating, please email me, Eve Springwood Minson at earthdreamingnow@yahoo.com and let's get growing!





Commission for All Ages Creating a Neighborly Community

Doylestown's Commission for All Ages is continuing to work toward its goal of creating not only a more livable, but a more neighborly, community in the Borough. The CFAA's Neighborhood Survey is now accessible electronically on the Borough's website and on paper at Borough Hall and various events and organizations throughout town.

By completing the survey, residents have an opportunity to express needs they may have as well as offer volunteer services to neighbors who could use some assistance – from simple yard chores, to reaching out to an isolated community member, to developing relationships among residents of all ages, bringing back the concept of “looking out for your neighbor.”

The Commission's Age Connection committee has spoken with Borough nursing homes in an attempt to include even our newest residents in its mission. The newly-formed Youth Connection committee is working with students at CB High School West and Our Lady of Mount Carmel CCD who are seeking volunteer opportunities to fulfill service requirements.

It is the goal of the CFAA to establish connections among Borough houses of worship and Borough organizations and alliances in order to pool resources as it attempts to connect neighbors within the Borough. It is the hope that these formal introductions will result in inter-generational friendships that will continue to grow.

Visit the Borough website to find a link to the Neighborhood Survey and complete one at www.doylestownborough.net. To learn more, contact the Borough office and look for CFAA representatives at upcoming Borough events.



Doylestown Business & Community Alliance

The holiday decorations were put up on November 8 by an all-volunteer force, including members of the DBCA, community-spirited residents and business owners, and many students from Central Bucks West and South H.S. Key Clubs. A hearty thank you to the more than 50 people who came out to help accomplish the huge undertaking, including the men from the Public Works department who assisted.

The early start to decorating was done to ensure that any problems with lights could be viewed and measures taken to fix them. If you haven't seen Broad Street at dark, check out the beautiful impact of the decorations this year. Thank you to the Borough administration for allowing the brackets to be turned, so the lighted snowflakes could be readily visible.

The *Santa is Coming to Town* and tree lighting event took place on Friday, November 27. This annual, evening after Thanksgiving tradition is sponsored by the DBCA, in partnership with Borough Council and the Doylestown Fire Department. The DBCA provides Santa's House and children can visit Santa in December. Bring your camera! Hours are M, W, F 5:30-7:30 pm, Sat. 1-3pm and 5:30-7:30 pm, Sun. and Christmas Eve 2-4 pm.

The beautiful community tree that annually decorates Starbucks Plaza is obtained by the DBCA and put up and decorated with the expert assistance of our remarkable Fire Department. The lights are contributed by the DBCA. The organization is a partner with the Borough in funding the Classic Towns program and has contributed to the purchase of the flags that grace our streets on holidays.

The Doylestown Business & Community Alliance works to strengthen the ties between residents, businesses and the Borough. In addition to our fundraising dedicated entirely to beautifying the community, we need the support of residents (in and outside the Borough) and businesses. Membership dues are vital to sustaining our work, and we also need people to become active members and help plan and participate in our endeavors.

Please check our web site: www.doylestownalliance.org where you will find information about our civic organization. **Print out our membership form and join today.** Consider adding a little more to the annual membership dues, for our Borough Beautification Fund. If you look around, you will see the tangible results of the Doylestown Business & Community Alliance efforts. Help us keep Doylestown beautiful and special.





Borough of Doylestown
 57 W. Court Street
 Doylestown, PA 18901

Presorted Standard
 U.S. Postage
PAID
 Doylestown, PA
 Permit No. 351



Borough of Doylestown

Borough Council Regular Monthly Meetings: 3rd Monday at 7:00 PM

Borough Council's Monthly Sub-Committee Meetings:

| | | |
|-------------------------------------|------------|---------|
| Water Utility | 2nd Thurs. | 6:30 PM |
| Zoning & Planning | 2nd Mon. | 7:30 PM |
| Energy & Environment | 2nd Mon. | 6:30 PM |
| Community/Govern. Affairs | 2nd Tues. | 7:00 PM |
| Public Works | 1st Mon. | 6:00 PM |
| Public Safety | 2nd Wed. | 7:00 PM |
| Recreation, ShadeTree, and Property | 2nd Wed. | 6:00 PM |
| Finance/Administration | 2nd Thurs. | 6:00 PM |

Boards / Commissions Monthly Meetings

| | |
|--|--|
| Park and Rec. Board 1st Tues. 7:00 PM | Zoning Hearing Board 3rd Wednesday 7:30 PM |
| Shade Tree Commission 3rd Wed. 7:30 PM | Fanny Chapman Pool Board 4th Monday 7:30 PM |
| Historic and Architectural Review Board 4th Wed. 7:30 PM | Planning Commission 4th Tuesday 7:30 PM |
| Revitalization Board 2nd Thurs. 5:00 PM | Environmental Advisory Council 3rd Tuesday 7:30 PM |

ALL MEETINGS ARE OPEN TO THE PUBLIC. YOU ARE ENCOURAGED TO ATTEND.

Doylestown Borough Bulletin

Published by Doylestown Borough Council

Phil Ehlinger, Editor

Community Liaison: Doylestown Revitalization Board

Production Assistants: Shirley Ament
 Tina Yoder



Inside This Issue

| | |
|-------------------------------|----|
| Council Corner | 2 |
| Fire Company News | 2 |
| Green Achievements | 3 |
| Kill A Watt | 4 |
| Village Basket | 4 |
| Building Green In the Borough | 5 |
| Maplewood Park | 6 |
| Clean Energy Community | 7 |
| Weathering the winter | 7 |
| Central Bucks Concerts | 8 |
| Tinicum Christmas | 8 |
| Mercer Museum | 9 |
| Ambulance News | 9 |
| CB Cares | 10 |
| Habitat ReStore | 11 |
| Rep. Quinn's Report | 12 |
| Michener Museum | 13 |
| Fire Company | 13 |
| Gourmet Getaway | 14 |
| Urban Farming | 14 |
| Commission for Ages | 15 |
| DBCA | 15 |